

ASAP Portfolio:

Name	Image Type	Geographical coverage	Mission	Start date	End date	Product	Number of scenes	Extension	Map
Frozen Baseline	Fine Descending orbits only	North of 60 + coastal regions of Hudson and James Bay and Arctic Archipelago	Canadian Interferometric mission	Sept 2000	Feb 2001	Individual mage product Include only data received as real-time or playback data in Gatineau or Prince Albert.	3106	Processing of multiple passes over site-specific areas RSAT 1 and 2 new acquisitions	1
Sea Ice Min and Max Snapshots	ScanSAR Wide A&B	Circum-Polar Basin	Extended Background Mission	Sept 2003 2004 2005 2006	March 2003 2004 2005 2006	Individual image products only over Canadian waters Mosaics of annual min and max ice extent	358	Continued the snapshots in time with RSAT 1 and 2 Processing of circum-polar data sets – require the archive content of ASF and Tromso	2
Arctic Supersites Site 1-7	ScanSAR Wide A&B	ArcticNet research sites	Shoulder seasons to capture freeze and thaw cycles	1996	...	Individual image products	2878	RSAT 1 and 2 new acquisitions	3
Great Slave Site 8	ScanSAR Wide A&B	Great Slave Lake	Shoulder seasons to capture freeze and thaw cycles	1996	...	Individual image products	237	RSAT 1 and 2 new acquisitions	3
Great Bear Site 9	ScanSAR Wide A&B	Great Bear Lake	Shoulder seasons to capture freeze and thaw cycles	1996	...	Individual image products	221	RSAT 1 and 2 new acquisitions	3
NWT Site 10	Standard		Radargrammetry mission – S2, S7	1996	...	Individual image products	117	RSAT 1 and 2 new acquisitions	3
Mackenzie Delta Site 11	Fine, Wide and Scansar	Mackenzie Delta		1996	...		203	RSAT 1 and 2 new acquisitions	3
Axel Heidberg Site 12	Fine 1 Descending	Axel Heidberg Island	Canadian Interferometric Mission	Sept 2000	Feb 2001	Individual image products	389	RSAT 1 and 2 new acquisitions	3
CIS Image Archive	Scansar Wide	Canadian waters	Normal operations	March 1997	...	Single-look complex Block-averaged images (2x2) and full res. Images	35000 +	RSAT 1 and 2 new acquisitions	4
Canadian Arctic Land masses mosaics	Scansar Narrow	Canadian Arctic	CSA background	Winter 1998,99		Single images and mosaics at 250, 500 and 1000m pixel size.	600	No plans	5

Maps and Graphs:

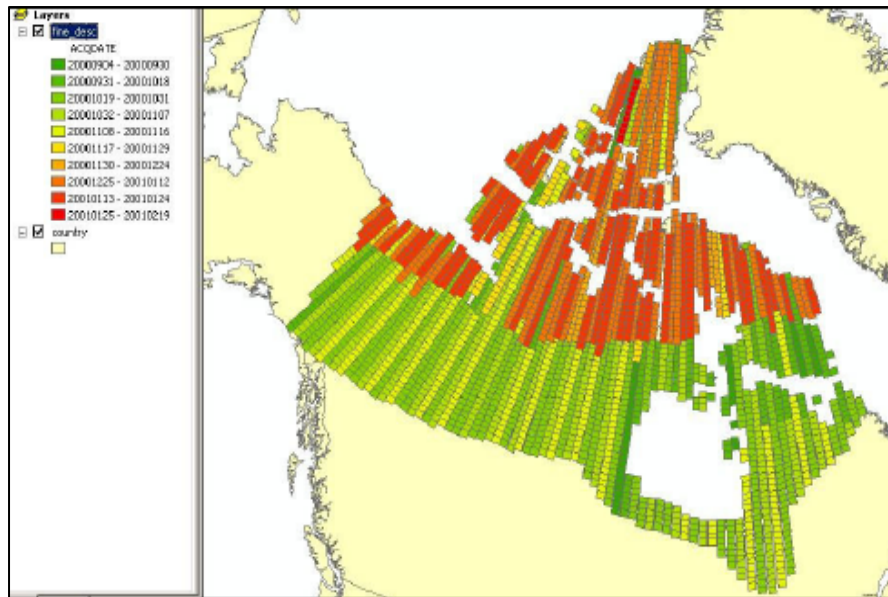


Fig 1. Frozen baseline

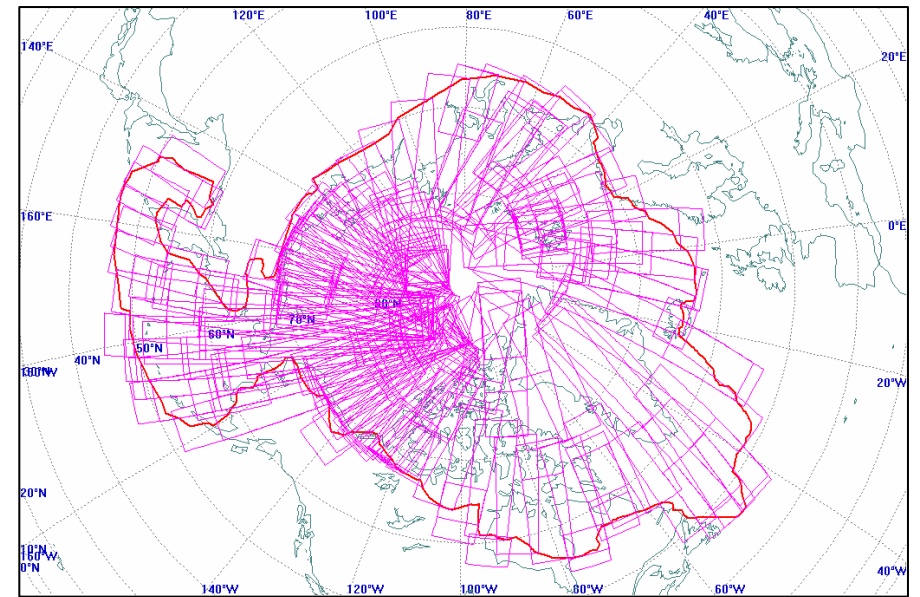


Fig 2. Region for min and max ice extent

Fig 3. Specific research sites

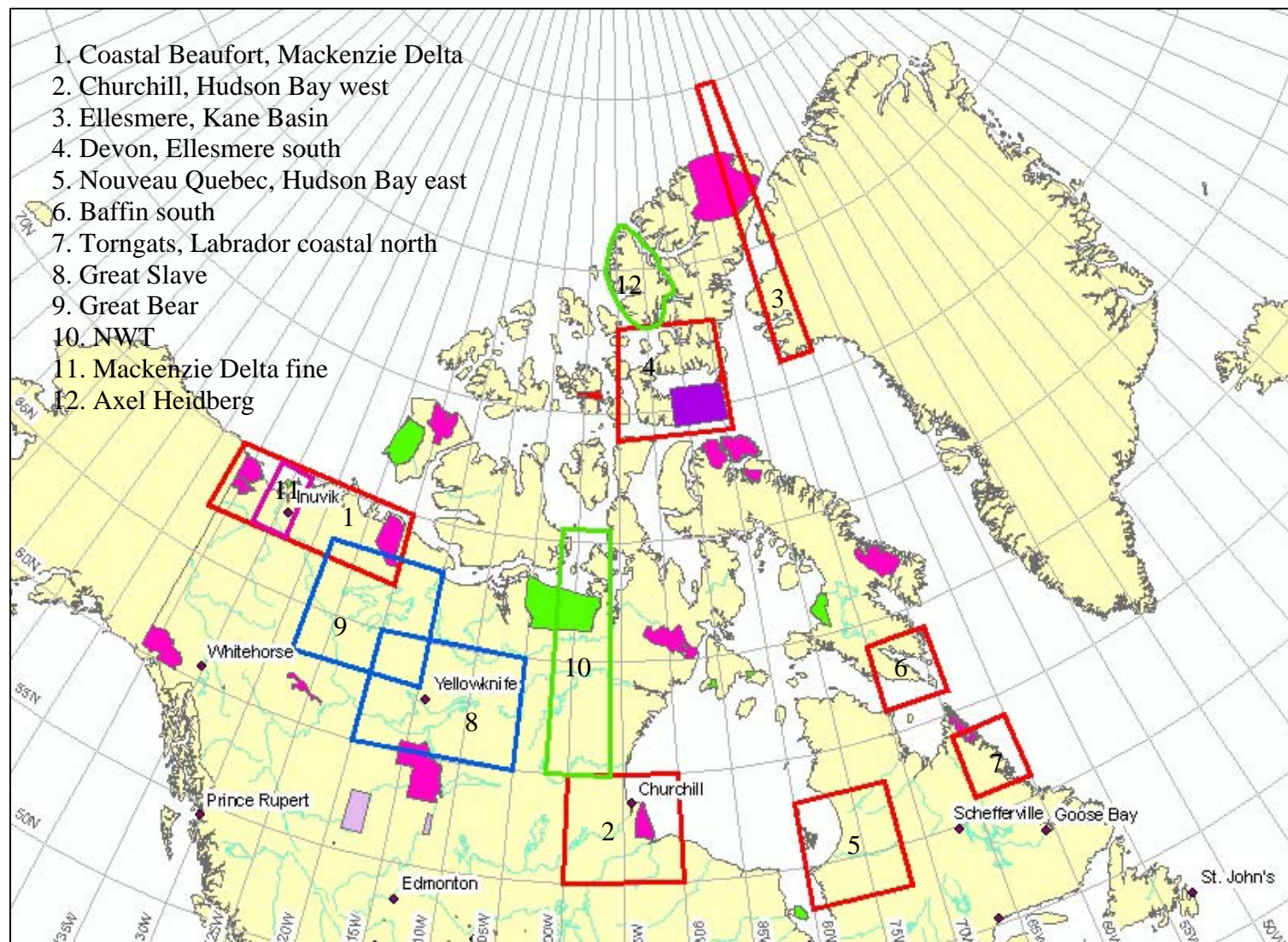
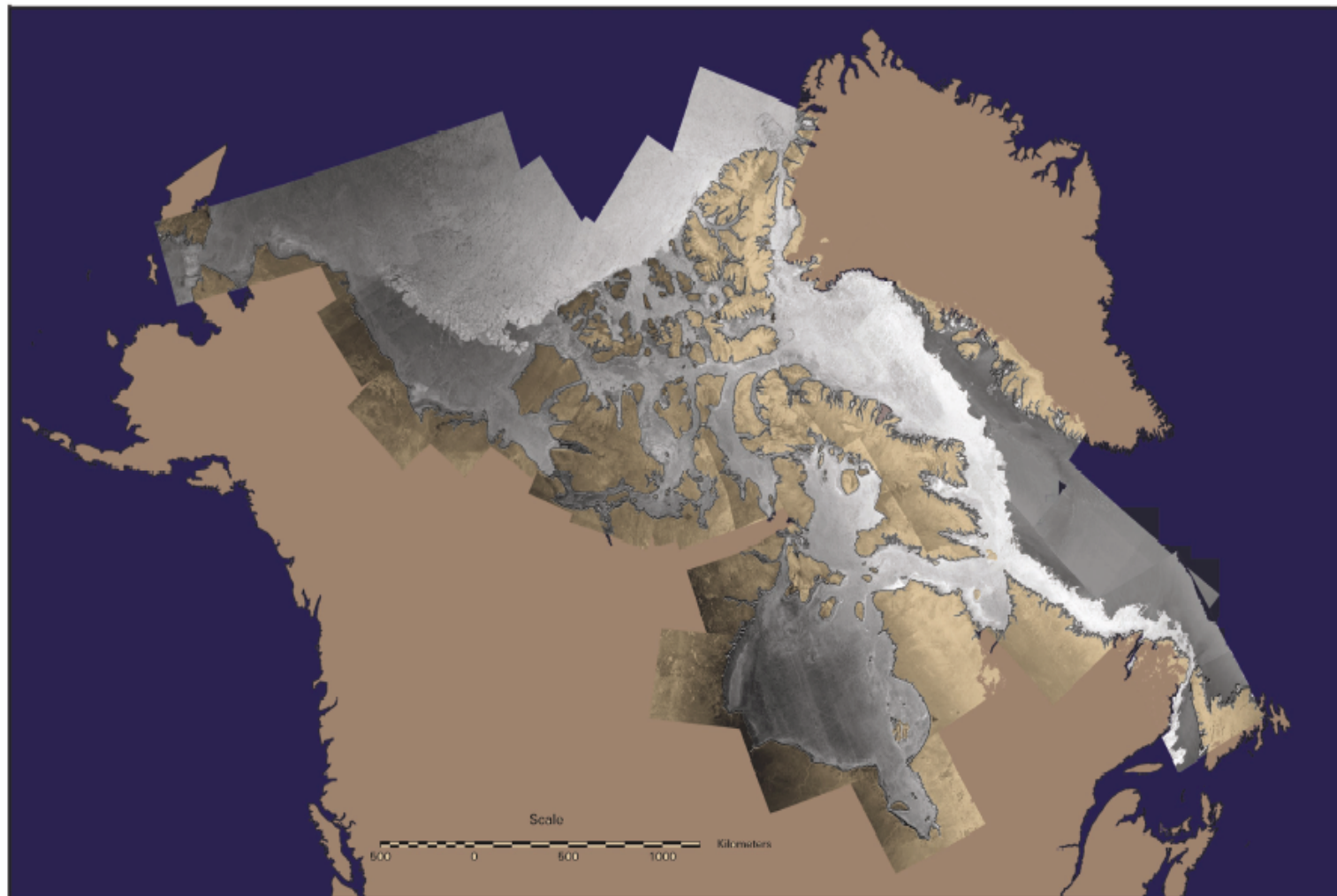


Fig 4 Canadian Ice Service area of interest



© 2003 Canadian Space Agency
© 2003 Agence spatiale canadienne



Environment
Canada

Environnement
Canada

Fig 5. Canadian Arctic Land Masses mosaic

