

MAMM Descending Coherence Mosaic

The MAMM descending coherence mosaic is a 32-bit float binary mosaic of coherence values (fig. 1). Range for the mosaic is from near zero, indicating low coherence to values nearing 1, indicating high coherence. The coherence values were calculated from 8-bit coherence mosaic output by setting the null value, 255 to zero, and dividing all other values by 255.

Equation:

8-bit input range: (0-254)

32-bit output range: (0-0.996)

$$DN_{32\text{-bit}} = \frac{DN_{8\text{-bit}}}{255}$$

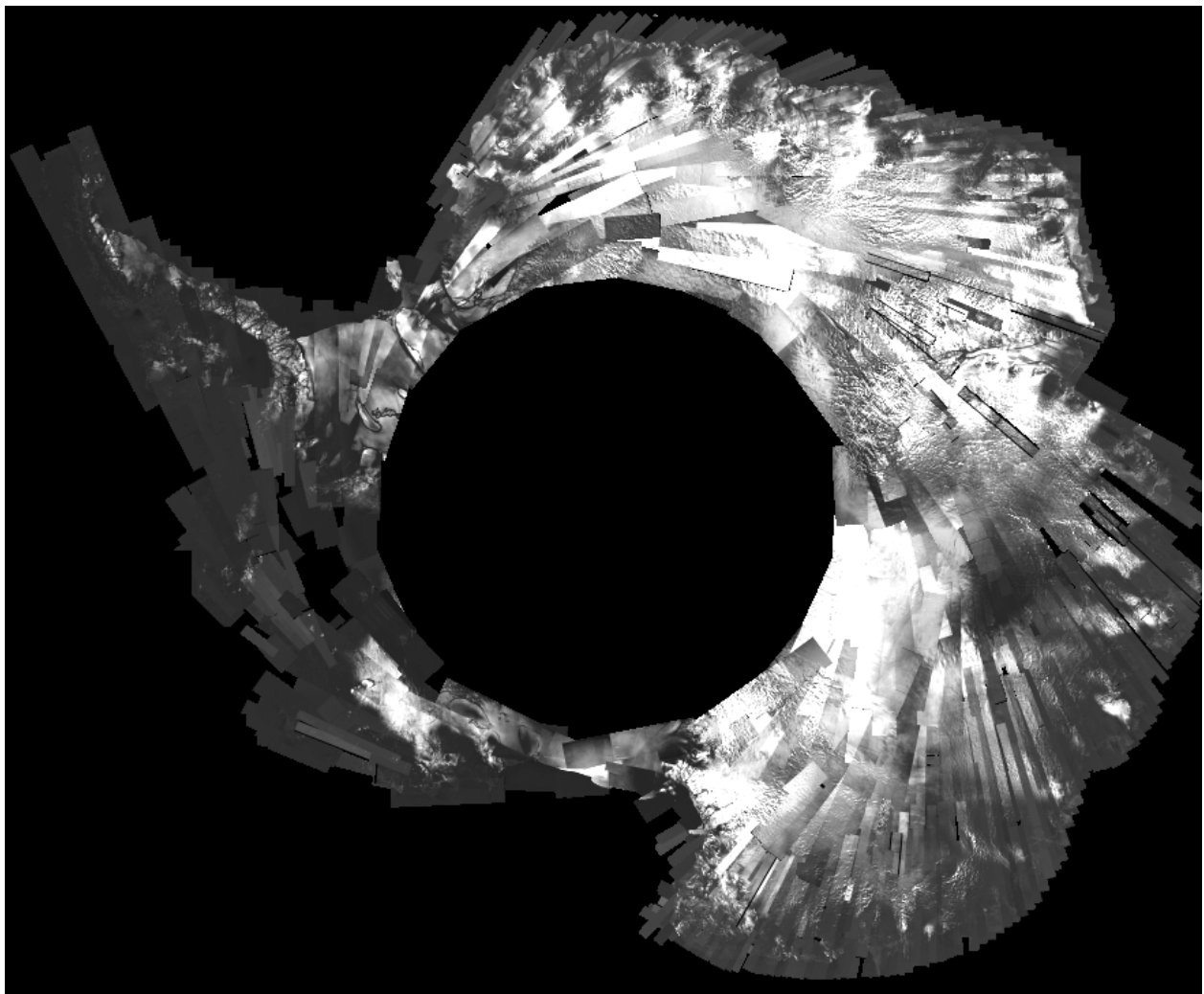


Fig. 1: MAMM Descending Coherence Mosaic