



Hurricane Irma Satellite Coverage

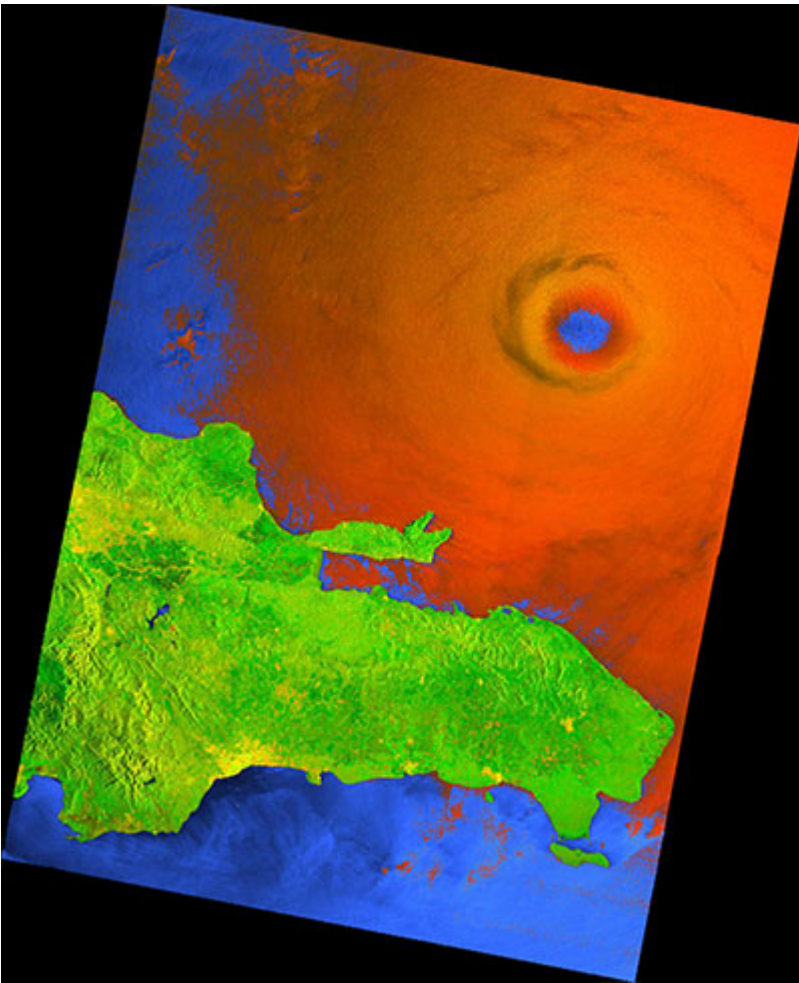
ASF DAAC supporting NASA's hurricane Irma response using ESA Sentinel-1 data

The ASF DAAC is supporting NASA's hurricane Irma response using Sentinel-1 data. New images are being added to the Hurricane Irma data feed(https://feeds.daac.asf.alaska.edu/sentinel/hurricane_irma/hurricane_irma_feed.xml) page as they are received and processed. Images are available within several hours of acquisition.

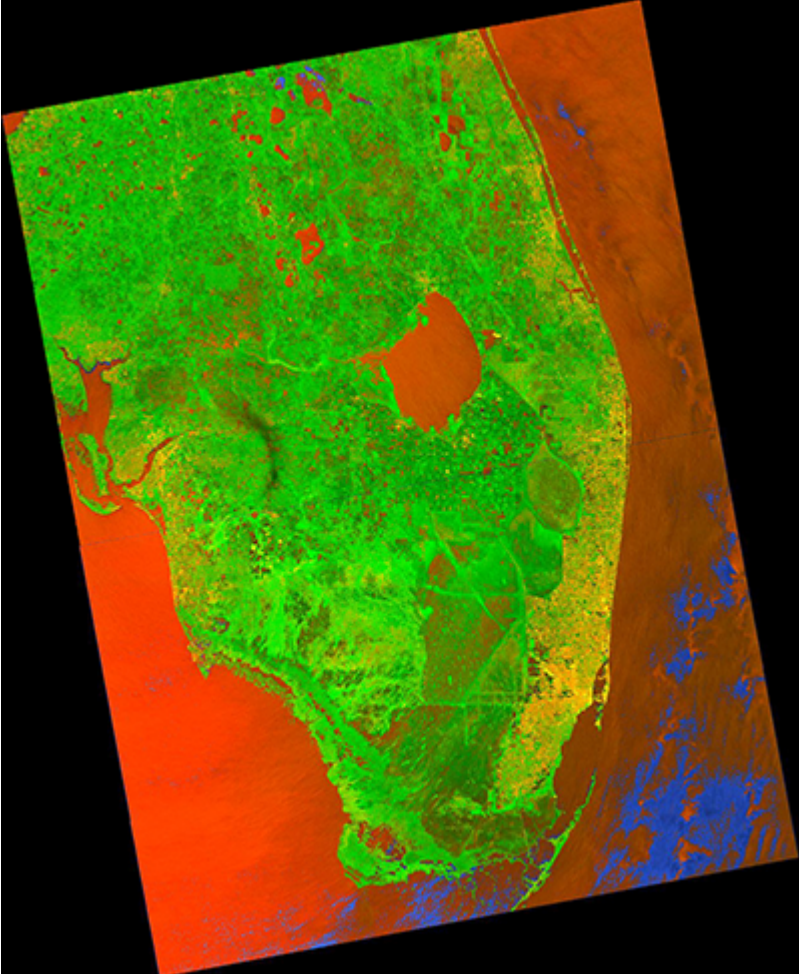
To download Hurricane Irma images, go to the Hurricane Irma data feed page(https://feeds.daac.asf.alaska.edu/sentinel/hurricane_irma/hurricane_irma_feed.xml) then select the scenes of interest to download. Unfortunately, browse images are not available in the data feed. Login is required.

To search for scenes that also display a browse image, please use our the Vertex interface(<https://vertex.daac.asf.alaska.edu/>) to do a geographic search. Users can then view, select, and download desired images. Login is required.

Hurricane Irma Data Feed(https://feeds.daac.asf.alaska.edu/sentinel/hurricane_irma/hurricane_irma_feed.xml)



(https://media.asf.alaska.edu/uploads/irma_sentinel_large_1600px.jpg)



(https://media.asf.alaska.edu/uploads/sep10_irma_s1a_large.png)


Sentinel-1 images (https://media.asf.alaska.edu/uploads/sep10_irma_s1a_large.png) of Hurricane Irma approaching the coast of the Dominican Republic, and traveling over the main body of the Florida peninsula. Contains modified Copernicus Sentinel data 2017.




About Us

The Alaska Satellite Facility downlinks, processes, archives, and distributes remote-sensing data to scientific users around the world. ASF's mission is to make remote-sensing data accessible.

Alaska Satellite Facility

 2156 Koyukuk Drive
Fairbanks, AK 99775

 (907) 474-5041

 [Contact Us](#)

UA is an AA/EO employer and educational institution and prohibits illegal discrimination against any individual:

www.alaska.edu/nondiscrimination(<http://www.alaska.edu/nondiscrimination>) .